

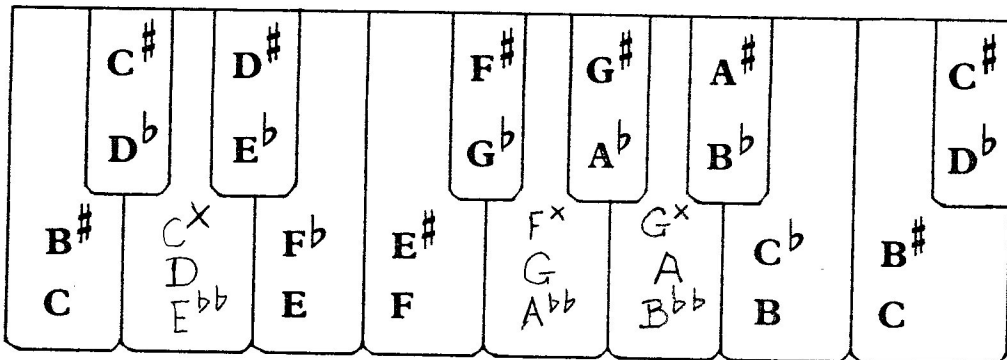
Enharmonic Tones

Enharmonic tones are tones that sound the same, but are written differently:

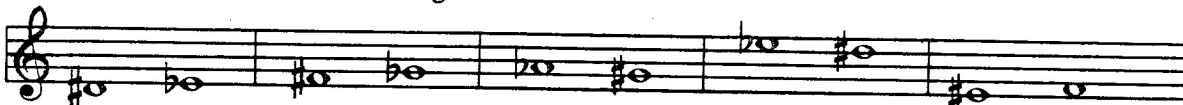


F# and G^b look different, but sound the same.

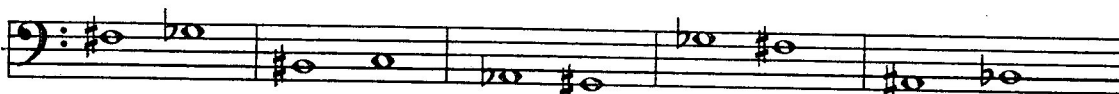
Enharmonic tones are shown easily on a piano keyboard:



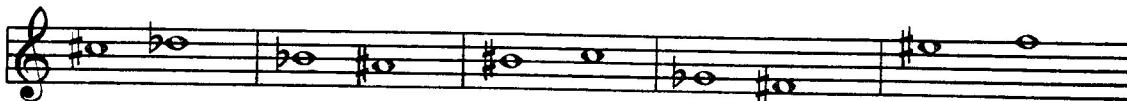
A. Give both names for the following notes:



1. _ _ 2. _ _ 3. _ _ 4. _ _ 5. _ _



6. _ _ 7. _ _ 8. _ _ 9. _ _ 10. _ _



11. _ _ 12. _ _ 13. _ _ 14. _ _ 15. _ _

B. Rewrite the following notes so that they sound the same but look different:

